

The Challenge of Your Life



Andes Navigator Latacunga - Quilotoa

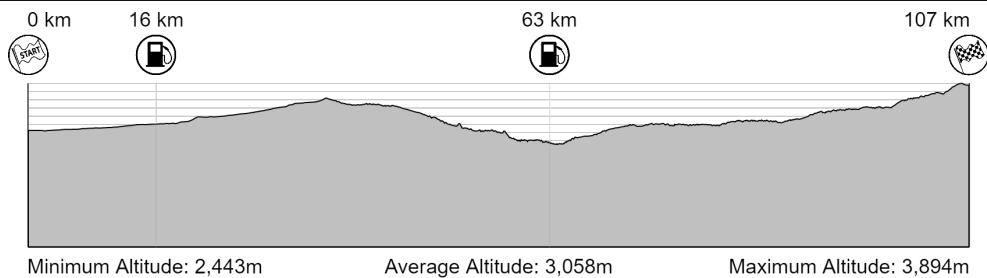
**107
Km**

**45
Waypoints**

**48 Km
Fuel Range**

Special Stage 1: 8,10 Km
Transit 1: 97,24 Km

Total Transit: 97,24 Km
Total Special: 8,10 Km
Total Segment: 105,34 Km



Start:
1544, Calle Fernando Sánchez de
Orellana, Latacunga, Provincia de
Cotopaxi, Ecuador

Finish:
Arco de Entrada Laguna Quilotoa
. Provincia de Cotopaxi, Ecuador.
PC1

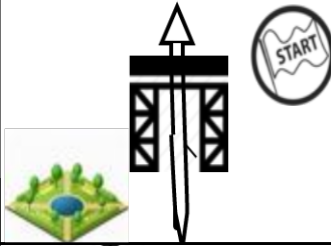
WARNING!!!

This route may be dangerous. Follow this route at your own risk.

Conditions change over time. Route leads to remote areas many miles from help. This is not a "closed" course. The route crosses and travels on public roads and highways where other vehicles, pedestrians, and animals may be present. Some hazards are identified here, for illustration purposes only, but most hazards are not identified or marked. Information provided is approximate, and should not be considered precise. Obey all laws and use caution at all times. If signs, maps, or other indicators suggest the route travels into closed, illegal, private property, or otherwise restricted areas, this roadbook should not be followed into such areas.

Andes Rider is not responsible for the accuracy or safety of this route.

0,00



TD

Salida PC0. Todo
Derecho

*Frente a Municipio.
Parque Latacunga.*

1

0,00

0,75



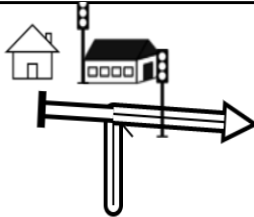
AG

Izquierda

2

0,75

1,06



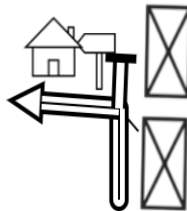
AD

Derecha

3

0,31

1,31



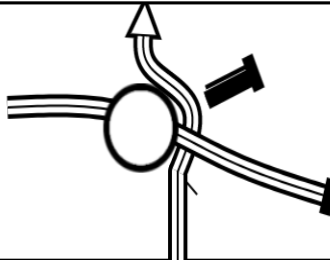
AG

Izquierda.

4

0,25

1,41

Tomar la tercera
salida

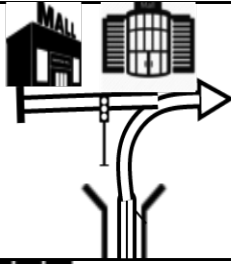
5

0,10

PROXIMA NOTA
PROCH NOTE
NEXT NOTE

0,51

1,92



AD
A la Derecha.
Supermaxi - Kiwy

6

0,51

2,08



Reset



IMP 
Letrero
"Lasso 19 / Quito 70"

Supermaxi

000°55.508'S
078°37.521'W

7

0,16

1,09



Cruce Peligroso.
Ampliación a 4
carriles

8

1,09

5,06

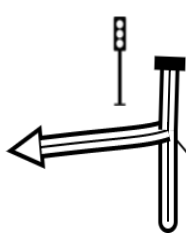


IMP
Tomar carril de la
izquierda

9

3,97

5,60



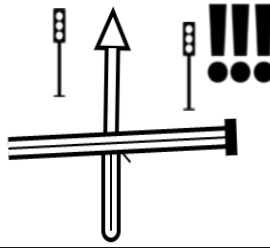
AG
Salida a la Izquierda.
Se sale de Panamer.

Vía a Saquisilí

10

0,54

6,85

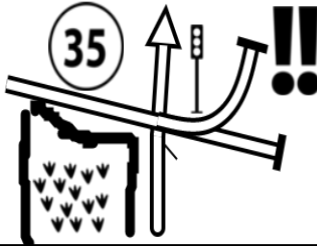


IMP 
PARAR. Cruce
peligroso

11

1,25

11,37



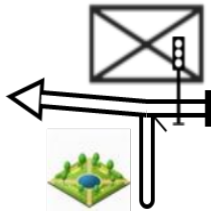
Parque Ecológico a la
izquierda

*Parque Cachipamba.
Saquisilí*

12

4,51

12,11



AG
Izquierda del parque

13

0,75

12,31

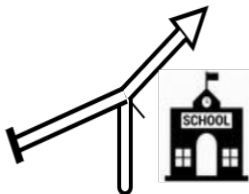


AD
A la derecha Farmacia
Cruz Azul

14

0,20

13,01



AD
A la Derecha.
Escuela J. Poveda

15

0,69

PROXIMA NOTA
PROCH NOTE
NEXT NOTE

0,12

13,12

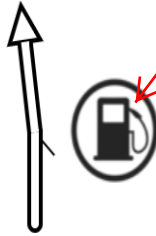


AG
A la izquierda

16

0,12

13,48

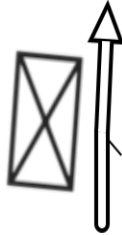


*Estación de
Servicio "Virgen del
Quinche"*

17

0,35

13,98

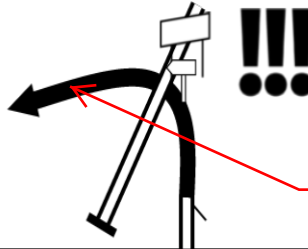


TDSPP
Centro de Salud a la
izquierda

18

0,51

15,52



AG
A izquierda vía
Sigchos

*Vía Guaytacama
Toacazo*

19

1,53

15,71



TDSPP AD
A Derecha. Maizal

20

0,20

PROXIMA NOTA
PROCH NOTE
NEXT NOTE

1,56

17,27

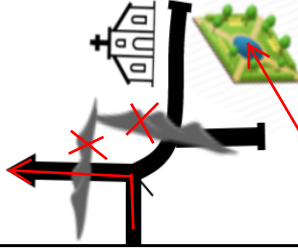


AD
A la derecha. Tienda
en esquina

21

1,56

22,78



AG
A Izquierda. ~~Vía~~
~~interrumpida~~
*Parque de
Toacazo*

22

5,51

23,12

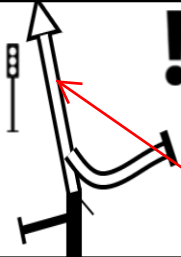


TDSPP
Mantenerse en
camino principal

23

0,34

23,62



TDSPP
Izquierda. Ir por ruta
principal
Tomar vía Sigchos

24

0,49

26,91

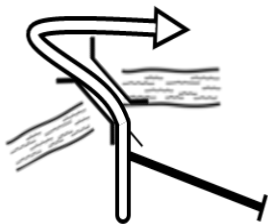


(V) TDSRP
Tienda. Ir por
carretera principal

25

3,30

27,14



S !!
Camino sinuoso

26

0,23

28,78



TDSPP
Ir por carretera principal

27

1,64

41,51



TDSPP
Ir por carretera principal

28

12,73

42,92

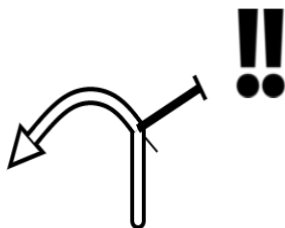


TDSPP
Camino Sinuoso.

29

1,41

46,11

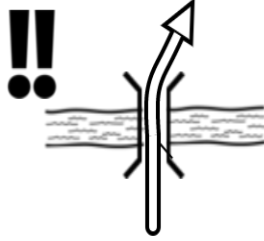


Curva Peligrosa

30

3,19

47,35

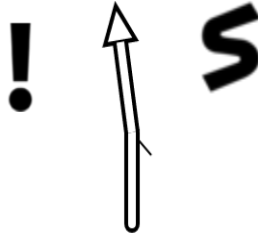


!!
Bajar Velocidad.
Puente peligroso

31

1,24

58,86



TDSPP
Ir por vía principal.
Camino Sinuoso

32

11,51

61,06



TDSRP
Ir por vía principal

33

2,19

61,42

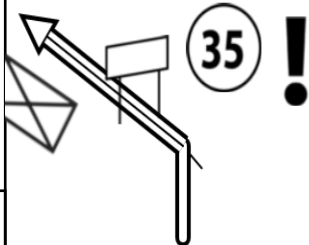


Estación de Servicio
Masgas

34

0,37

64,19



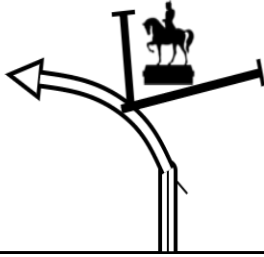
TDSPP **(V)**
Ir por vía principal.
Entrada a pueblo

35

2,76

Entrada a Sigchos

64,80

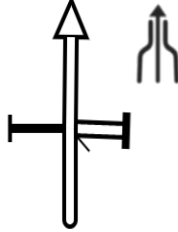


TDSRP AG
Ir por vía principal a izquierda

36

0,62

65,04

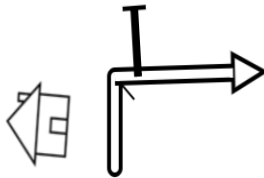


TD
Ir recto (derecho)
Reducción de vía.

37

0,24

65,21

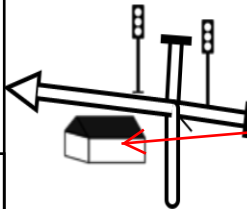


AD
A la Derecha. Casa Azul

38

0,16

65,54



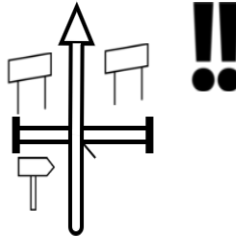
AG
A izquierda.
Escuela Sigchos

000°42.199'S
078°53.255'W

39

0,33

65,88



TD
Ir recto (derecho) Vía a Chug...

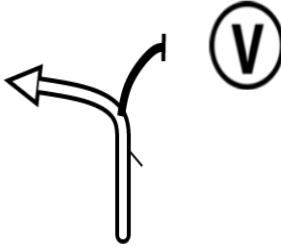
40

0,35

PROXIMA NOTA
PROCH NOTE
NEXT NOTE

19,87

85,76

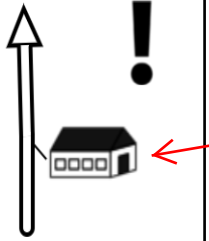


AG
A la Izquierda.
Entrada a Chugchilan

41

19,87

87,82



TDSPP
Ir por vía principal
Hostal Claud Forest

42

2,07

104,75

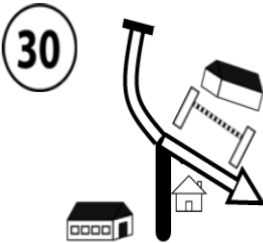


AG
A la izquierda. Salida
de vía principal

43

16,93

105,04

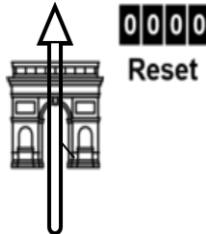


AD
A la Derecha. Entrada
Quilotoa.

44

0,29

105,34



Final de etapa

*Tomar el siguiente
archivo.*

45

0,30

0,00

**107
Km**

**45
Waypoints**

**48 Km
Fuel Range**

Start:
1544, Calle Fernando Sánchez de
Orellana, Latacunga, Provincia de
Cotopaxi, Ecuador

